

The Gender Gap: Effects of Campus Safety and Security on Academic Experience and Well-being

Bernadin Bernardino, Hannah Cordeiro, Elissa Gomez, Fernando Hernandez, Silk Shimamoto, and Nancy Binkin, MD, MPH

B.S. Honors Practicum | University of California, San Diego | Herbert Wertheim School of Public Health and Human Longevity Science

Background

- UCSD's increasing campus accessibility and crime rates may affect student perceptions of safety
- Previous studies suggest that perceived safety impacts academic success and well-being
- Study objectives:
 - Determine student perception of safety on campus
 - Identify students' top three safety concerns on campus
 - Determine student awareness of campus safety resources
 - Assess whether perceived campus safety impacts students' academic experience and well-being
 - Assess the effects of gender on perception, concerns, and impact

Methods

- Qualtrics survey emailed to all BSPH senior capstone students in 2023; response rate 82% (178/217)
- Safety module included questions on whether they felt protected from physical harm at UCSD, knowledge of resources, specific safety concerns, and effects of campus safety concerns on their academic experience and well-being
- Data analyzed using Epi Info 7.1

Results

- 88% of students agreed/strongly agreed that they felt protected from physical harm on campus
- Top safety concerns:
 - Walking on campus at night (60%)
 - Taking transportation to and from campus (45%)
 - Theft of personal property (41%)
- 92% were familiar with at ≥ 1 safety resource:
 - UC Police Department (76%)
 - Timely Warnings (69%)
 - Campus Safety Escorts (52%)
- No significant differences in perceived safety by gender (88% v. 85%, but females more concerned about night safety (71% v. 23%; $p < 0.01$) and taking public transportation (51% v. 23%; $p < 0.01$)
- Females 2.0 times as likely to report that safety has impacted their academic experience (95% CL 1.3-3.1, $p = 0.0003$) and 2.1 times as likely to report it has affected their wellbeing (95% CL 1.3-3.3, $p = 0.0004$)

Conclusion & Implications

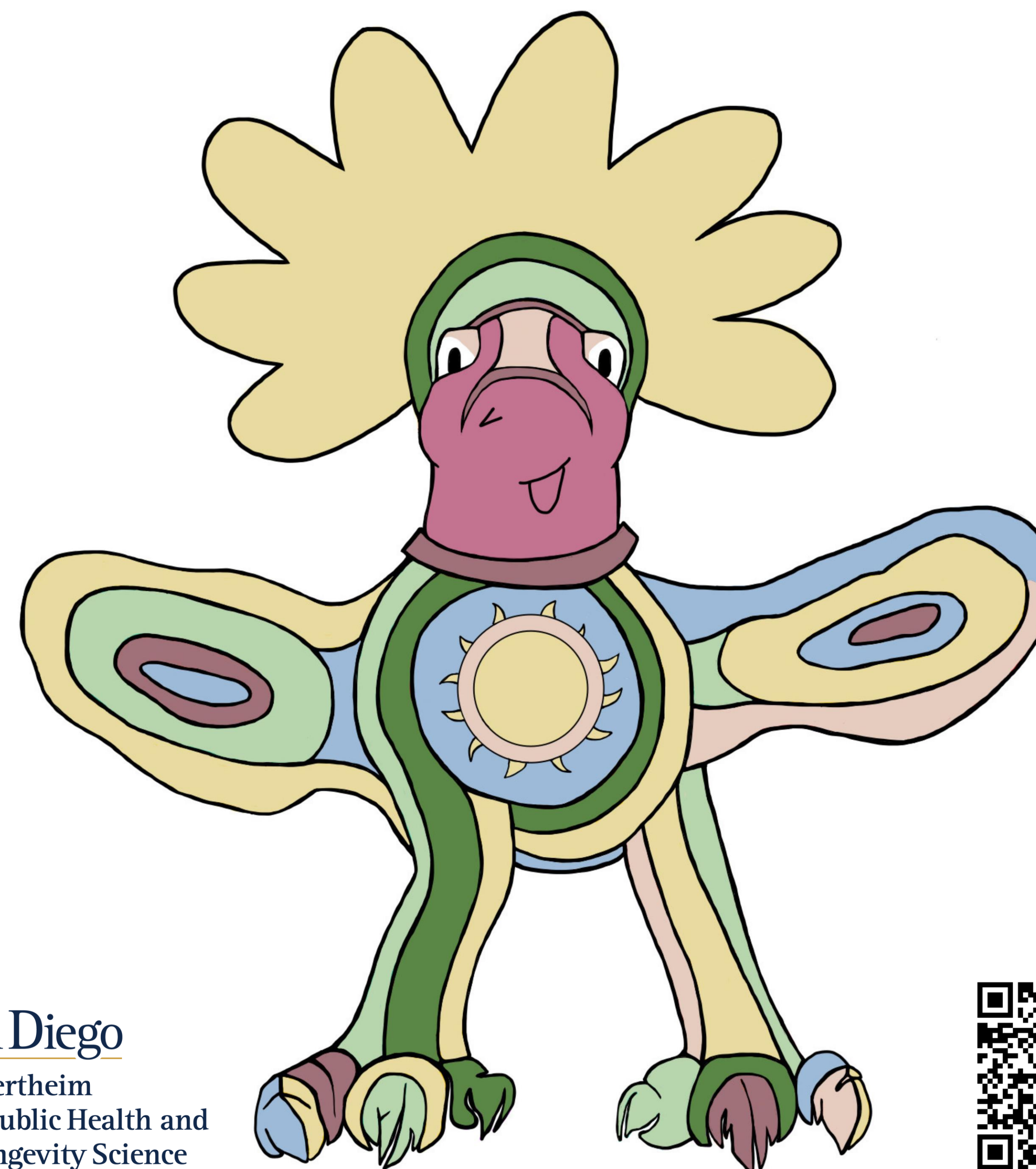
- Female students generally feel safe on campus, but they are:
 - Concerned about night safety and public transportation
 - More likely to report that safety concerns negatively impact their campus experience and wellbeing
- UCSD safety resources must build trust with female students to maximize service use and ensure optimal student outcomes, such as:
 - Increasing police presence during the night and at the Trolley Station
 - Coordinating on-campus safety resources with late-night classes

SUN GOD SAYS:

Students generally feel safe on campus

Females are more likely to report that safety concerns have affected their academic experience

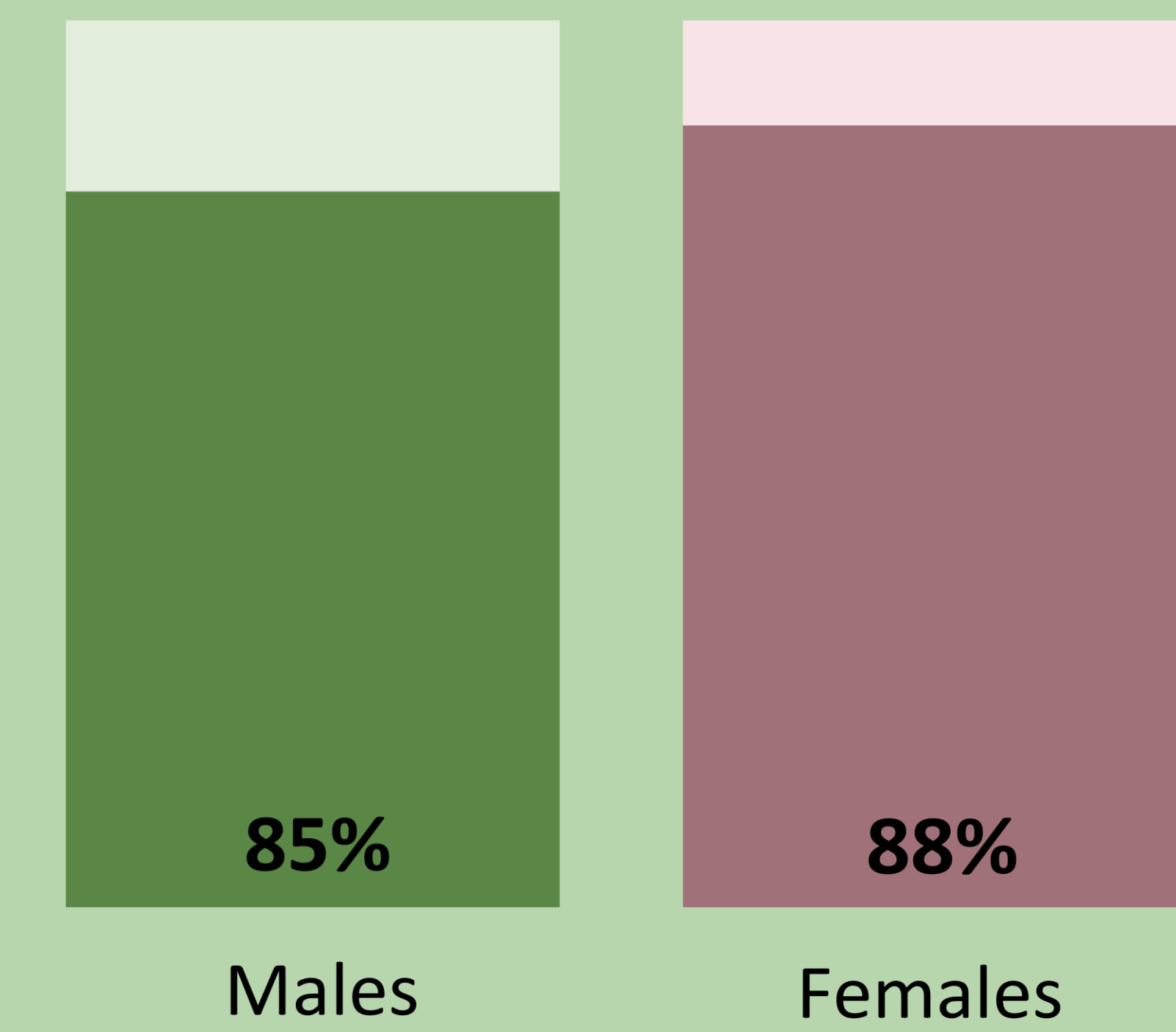
UCSD should prioritize campus night safety & safe public transportation for students



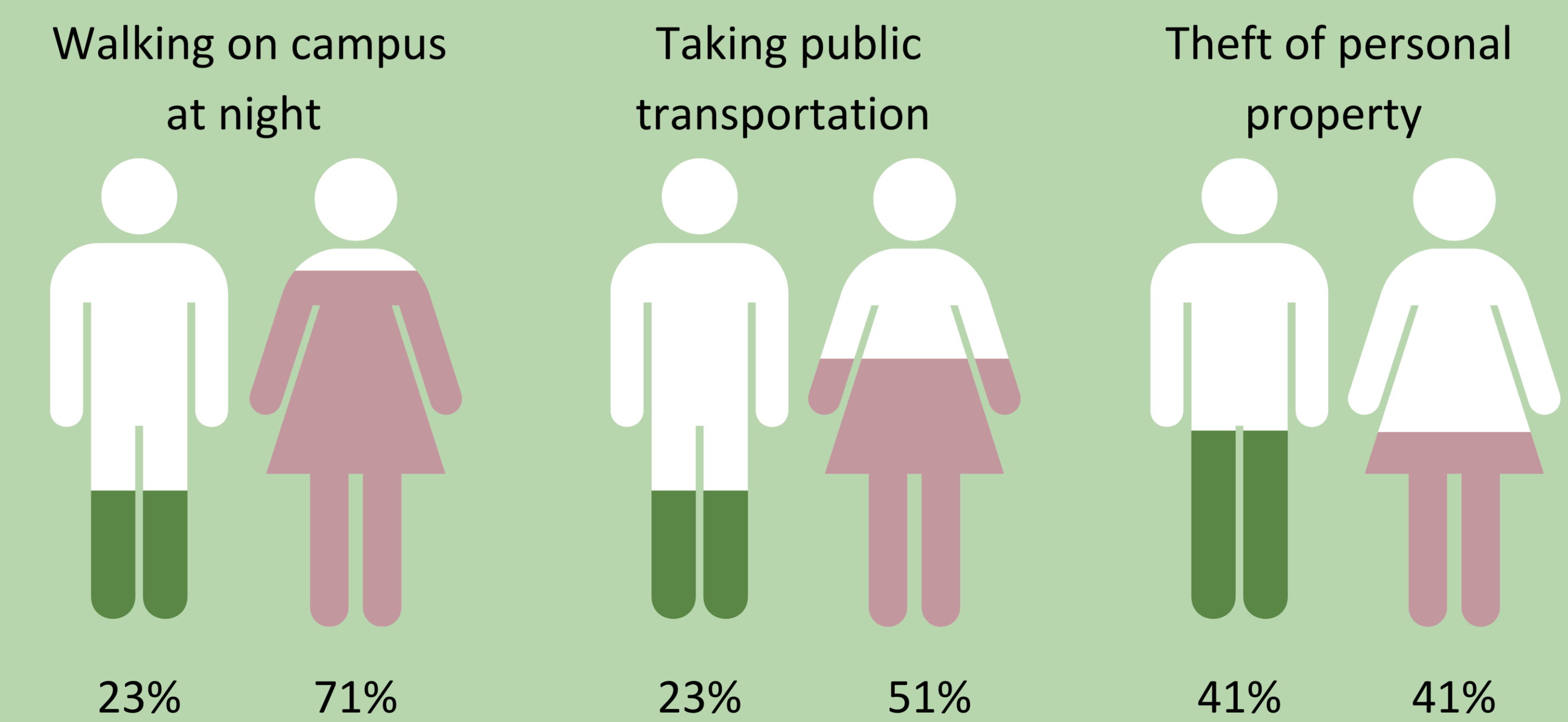
UC San Diego
Herbert Wertheim
School of Public Health and
Human Longevity Science



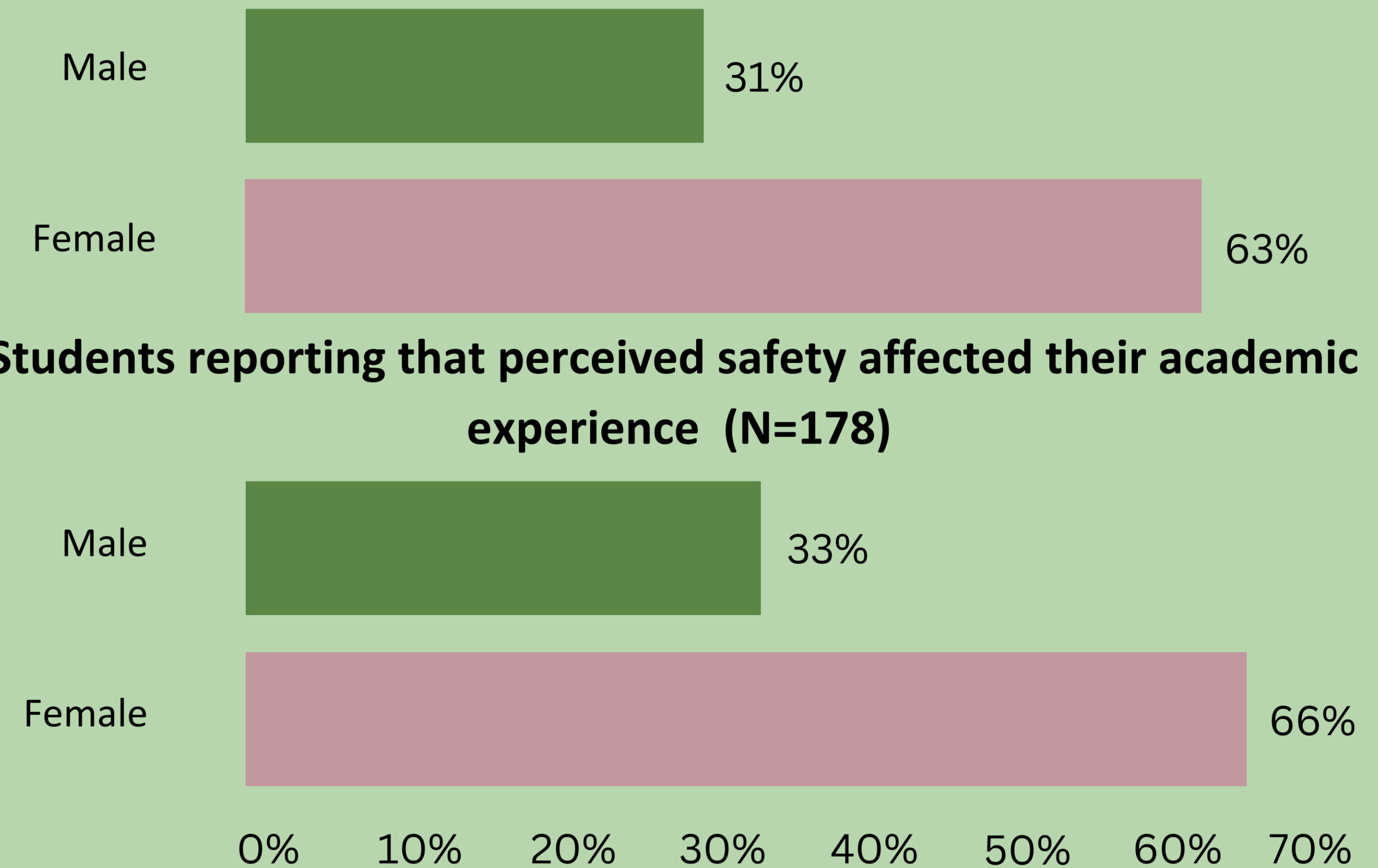
"I feel protected from harm at UCSD"



Top 3 safety concerns on campus by gender, BSPH capstone, 2023 (N=178)



Students reporting that perceived safety affected their well-being (N=178)



Students reporting that perceived safety affected their academic experience (N=178)

